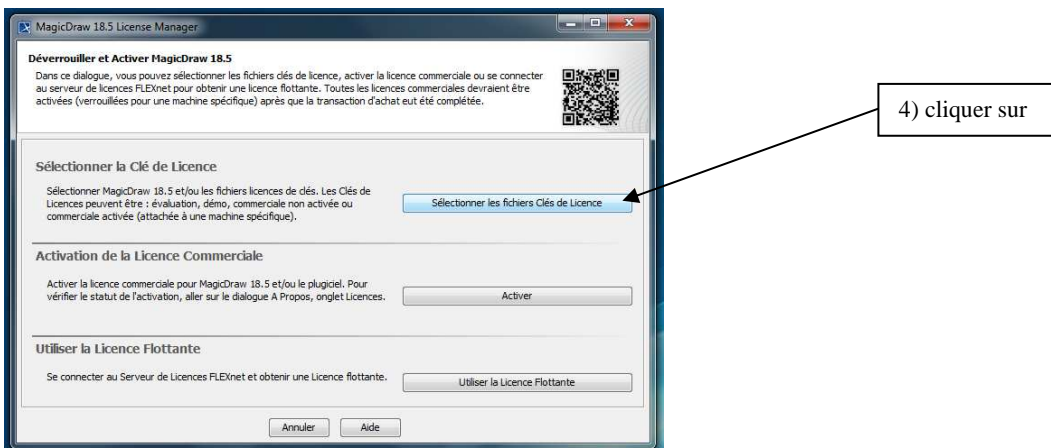
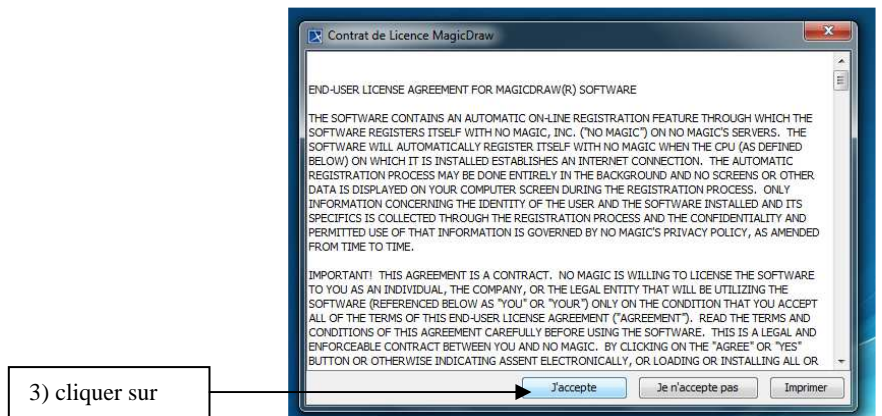
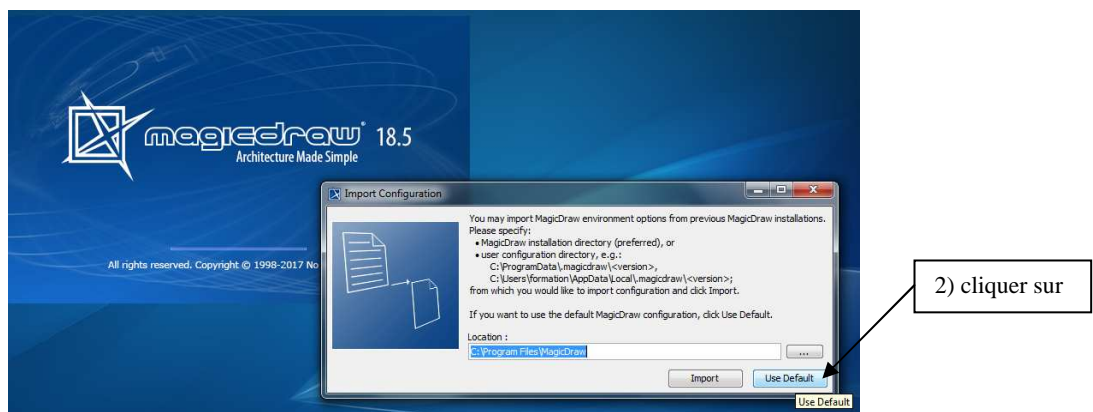
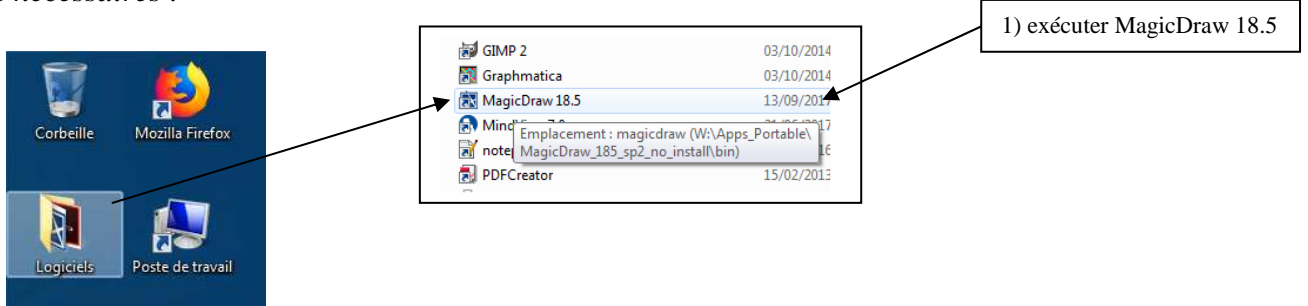
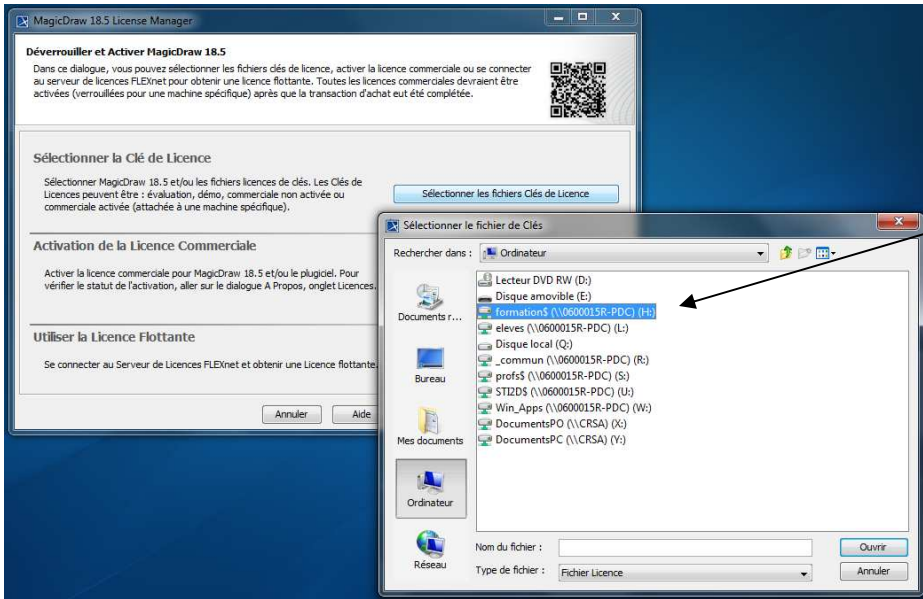




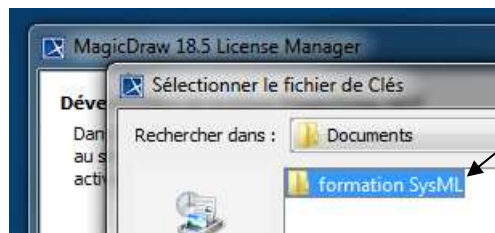
Etape 1 : Ouvrir MagicDraw

Actions nécessaires :



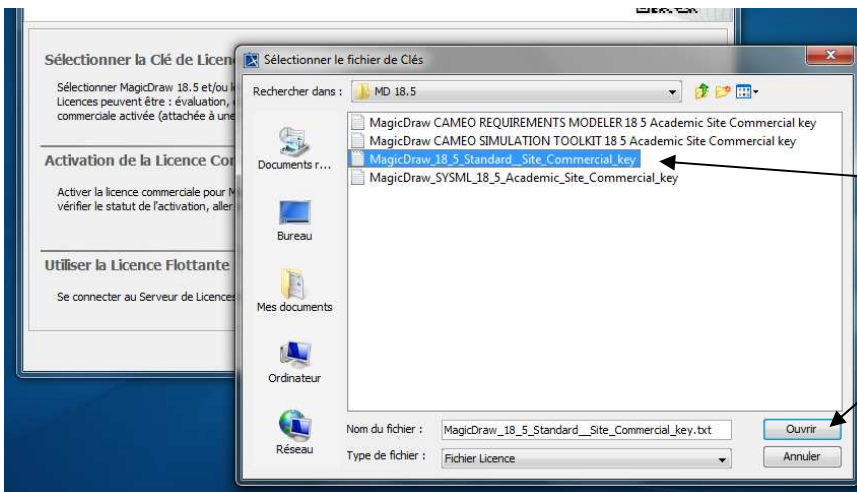
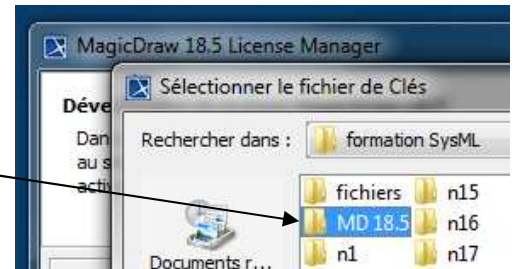


5) choisir le lecteur **formation**



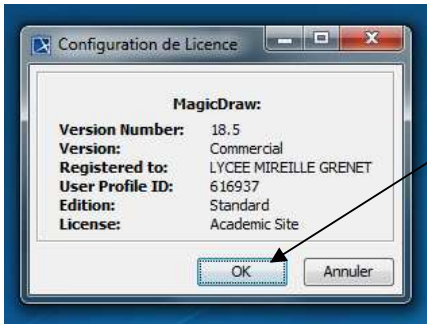
6) choisir le dossier **formation SysML** dans le dossier Documents

7) choisir le dossier **MD 18.5** qui contient les clés de licence

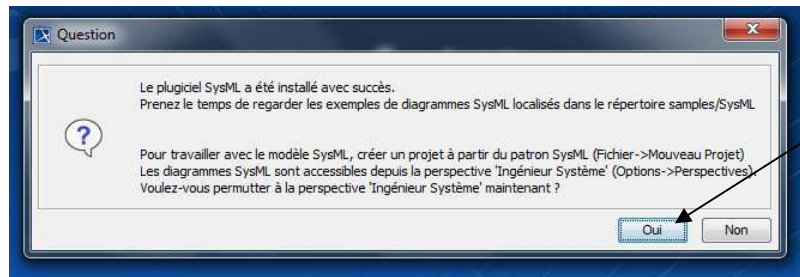


8) choisir la clé de licence **MagicDraw**

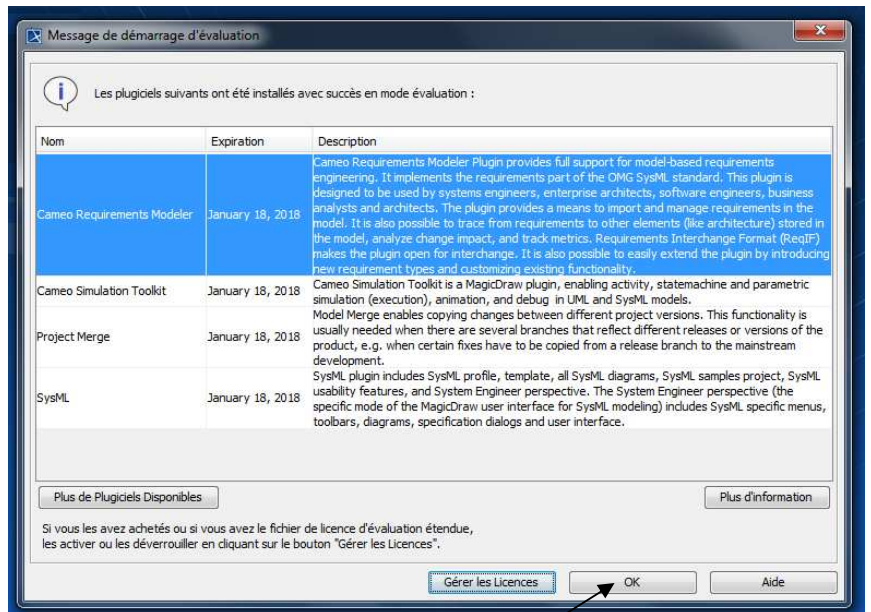
9) cliquer sur



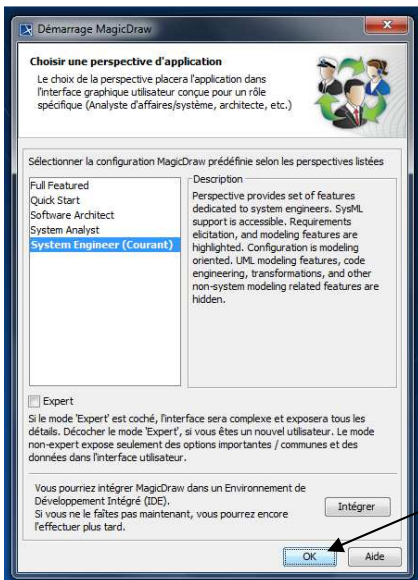
10) cliquer sur



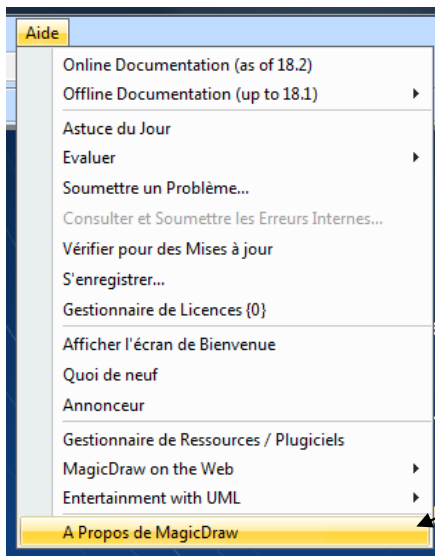
11) cliquer sur



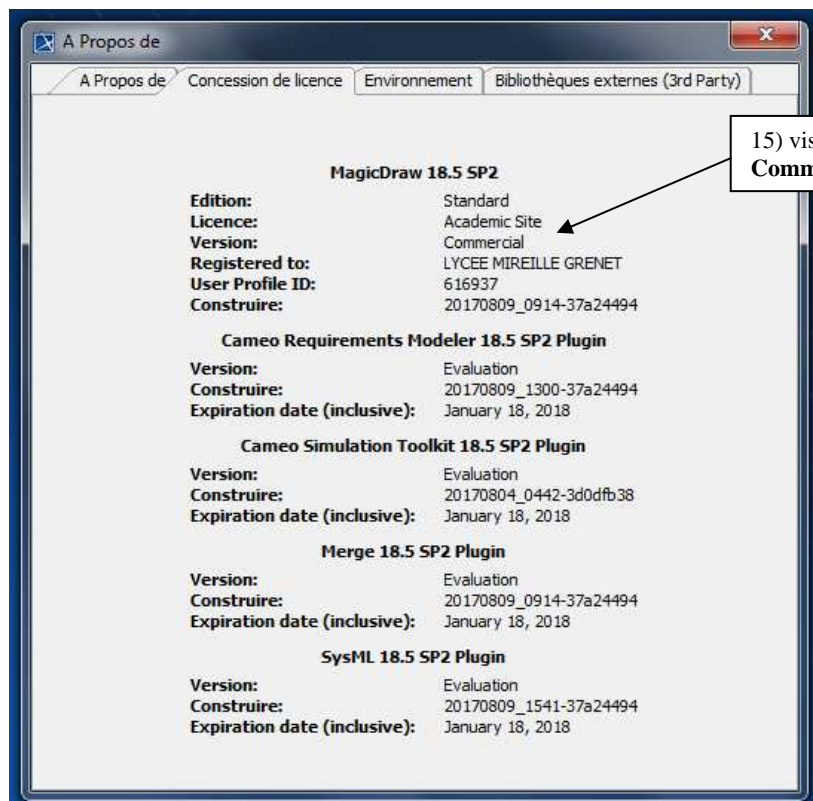
12) cliquer sur



13) cliquer sur



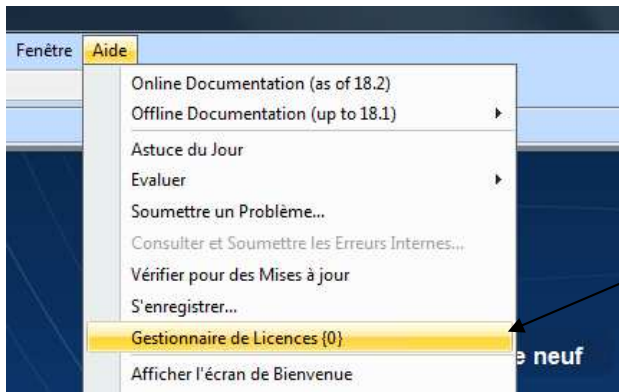
14) choisir



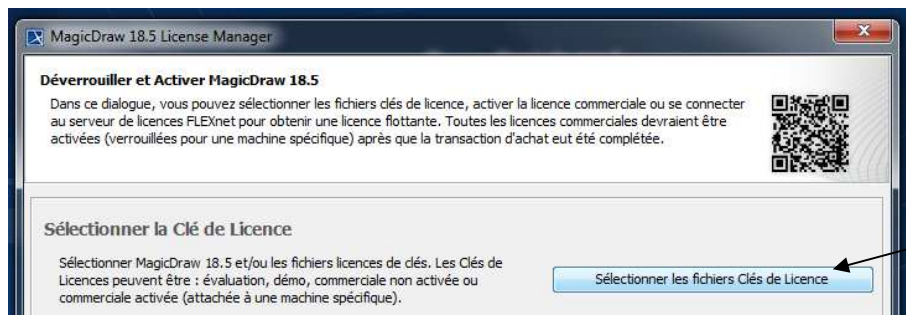
15) visualisation de la licence Commercial (clé de licence)



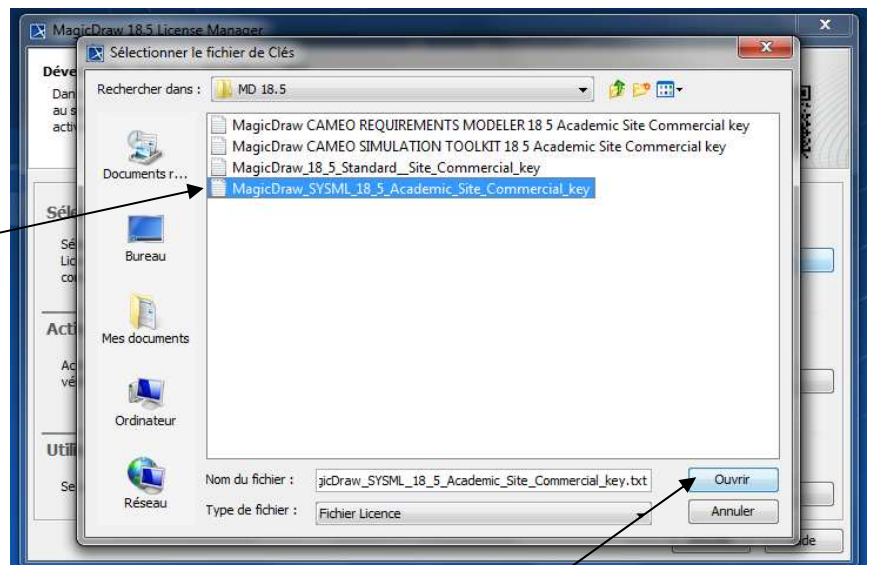
16) cliquer sur



17) choisir **Gestionnaire de Licences**

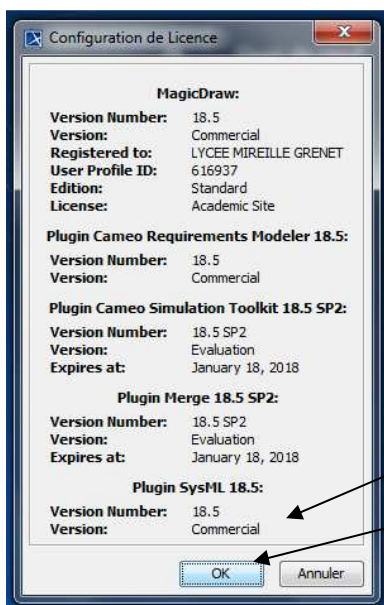


18) cliquer sur



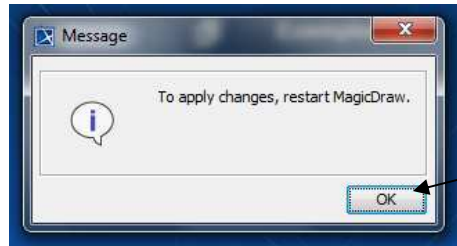
19) choisir la clé de licence **SysML**

20) cliquer sur



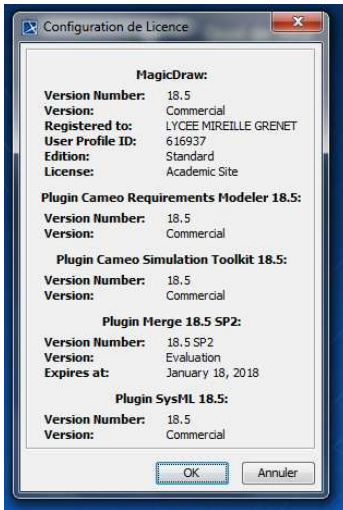
21) visualisation de la licence **Commercial** (clé de licence)

22) cliquer sur



23) cliquer sur

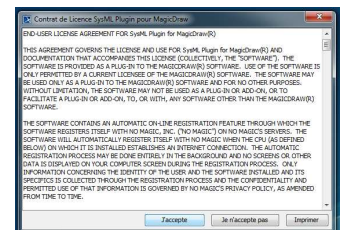
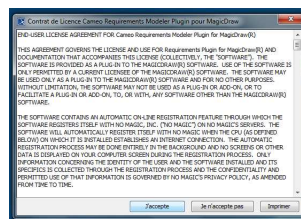
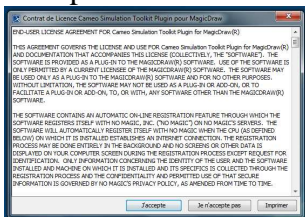
Installer la licence **Commercial** de Caméo Simulation Toolkit 18.5 et visualiser :



Quitter MagicDraw et de nouveau Ouvrir MagicDraw :

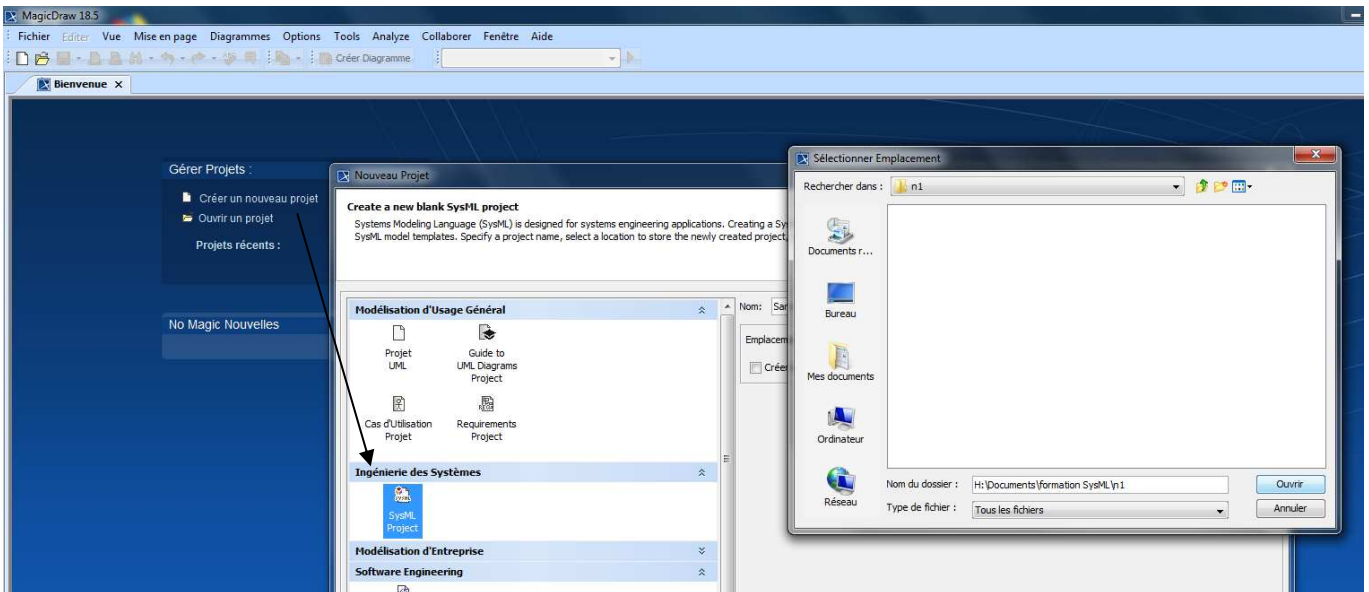


Accepter les licences **Commercial**





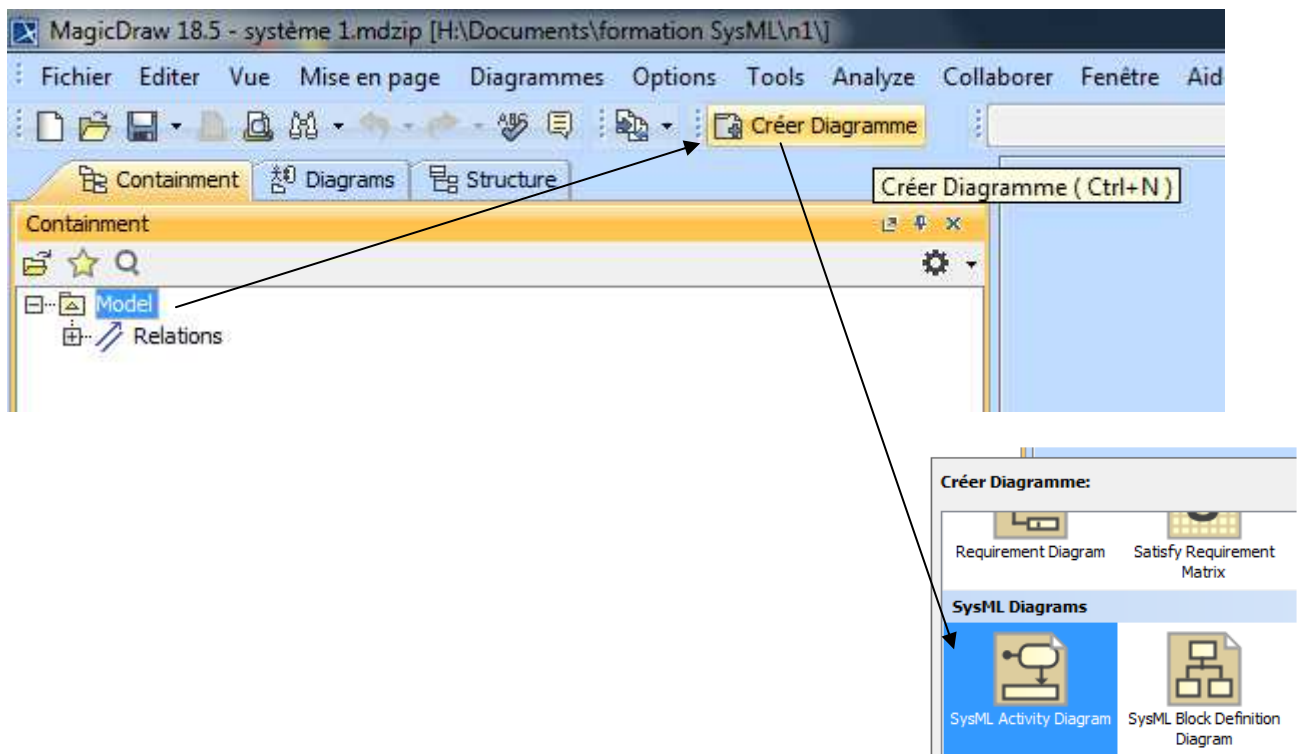
Etape 2 : Créer un projet dans votre dossier ni (exemple n1)

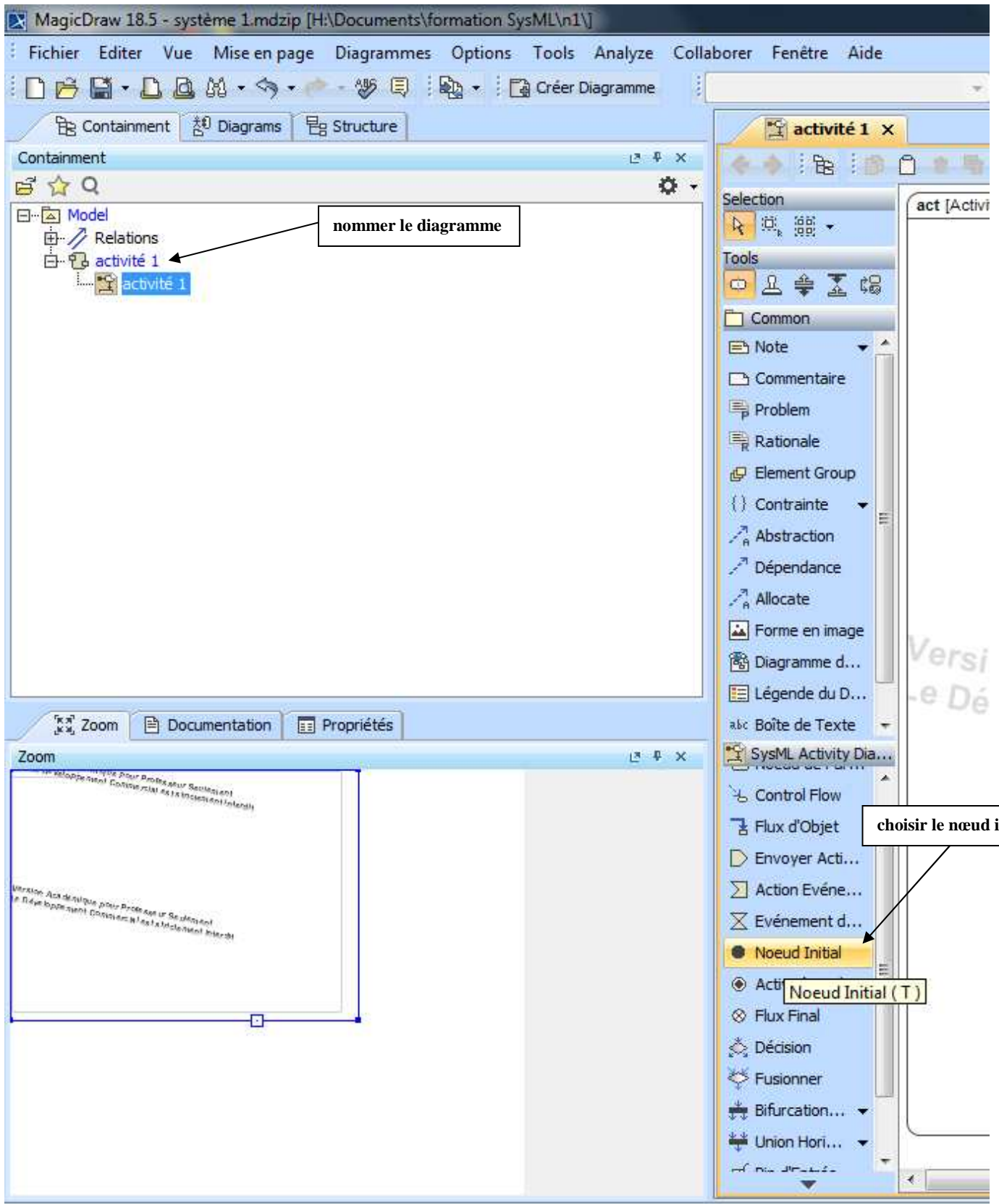


Nom: système 1

Emplacement du Projet: H:\Documents\formation SysML\n1

Etape 2 : Créer un diagramme d'activité (act)

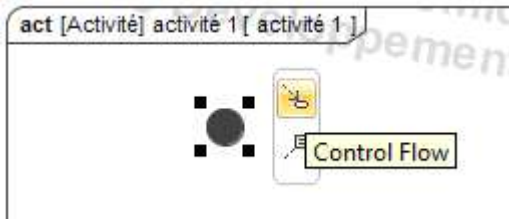




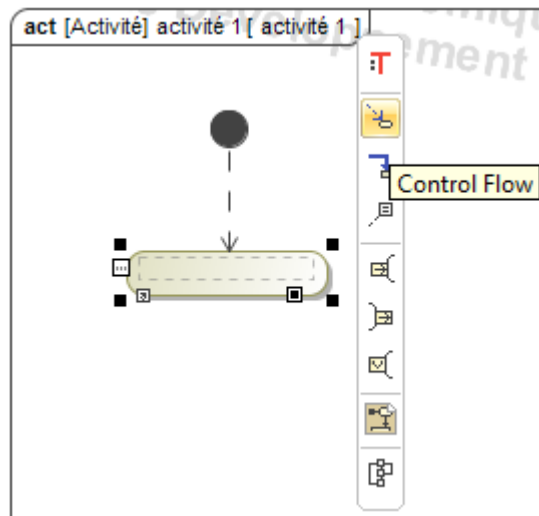
The screenshot shows the MagicDraw 18.5 interface with the following components:

- Menu Bar:** Fichier, Editer, Vue, Mise en page, Diagrammes, Options, Tools, Analyze, Collaborer, Fenêtre, Aide.
- Toolbar:** Includes icons for file operations and a 'Créer Diagramme' button.
- Navigation Tabs:** Containment, Diagrams, Structure.
- Containment Panel (Left):** Shows a tree view with 'Model' containing 'Relations' and 'activité 1'. A callout box labeled 'nommer le diagramme' points to the 'activité 1' node.
- Diagram Canvas (Bottom Left):** A zoomed-in view of a diagram area with a blue border.
- Tools Panel (Right):** A list of SysML diagram elements. A callout box labeled 'choisir le nœud initial' points to the 'Noeud Initial' element, which is highlighted in yellow. Below it, a tooltip shows 'Noeud Initial (T)'.

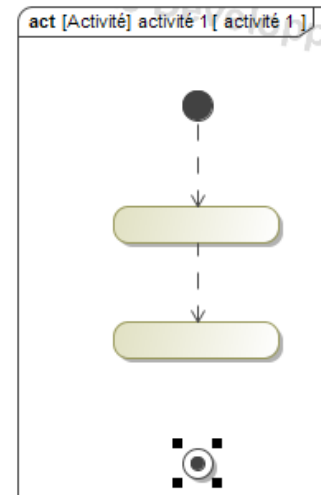
Positionner le nœud initial et sélectionner un arc de flot de contrôle



Positionner le nœud d'action et sélectionner un arc de flot de contrôle



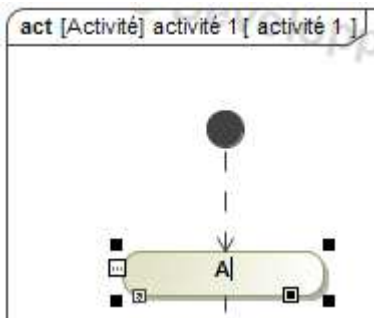
Positionner le nœud final d'activité



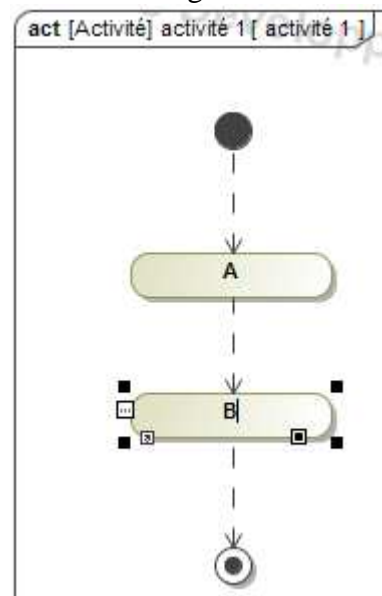
Pour tracer des arcs rectilignes



Ecrire l'action élémentaire



Edition du diagramme terminé



Enregistrer et visualiser les 2 fichiers générés

